

HIDDEN VALLEY FARM PRESERVE

Directions:

- From Route 82 take Route 151 north toward Moodus Center.

OPTION 1

- Take a right onto Route 149 and your first left onto North Moodus Road.
- Take a right onto Grist Mill Road.

OPTION 2

- Take a right onto Route 149.
- Take the second left onto Grist Mill Road.

Parking is available in a small lot adjacent to the Moodus River on Grist Mill Road.

For more information or to report any problems during your visit, see:
www.ehlt.org

Trail Facts:

- ◇ The red trail is .7 miles long and is mostly flat, meandering through the woodlands and wetlands.
- ◇ The red trail is not a loop but can be accessed on Grist Mill Road or on Clark Gates Road.
- ◇ The .4 mile blue trail is accessed from the red trail and takes you along the side of the Moodus River.

Permitted Activities:

- ◆ Hiking
- ◆ Nature study
- ◆ Snowshoeing
- ◆ Birding
- ◆ Fishing

No motorized vehicles are allowed on the property.



EAST HADDAM
YOUTH AND FAMILY
SERVICES

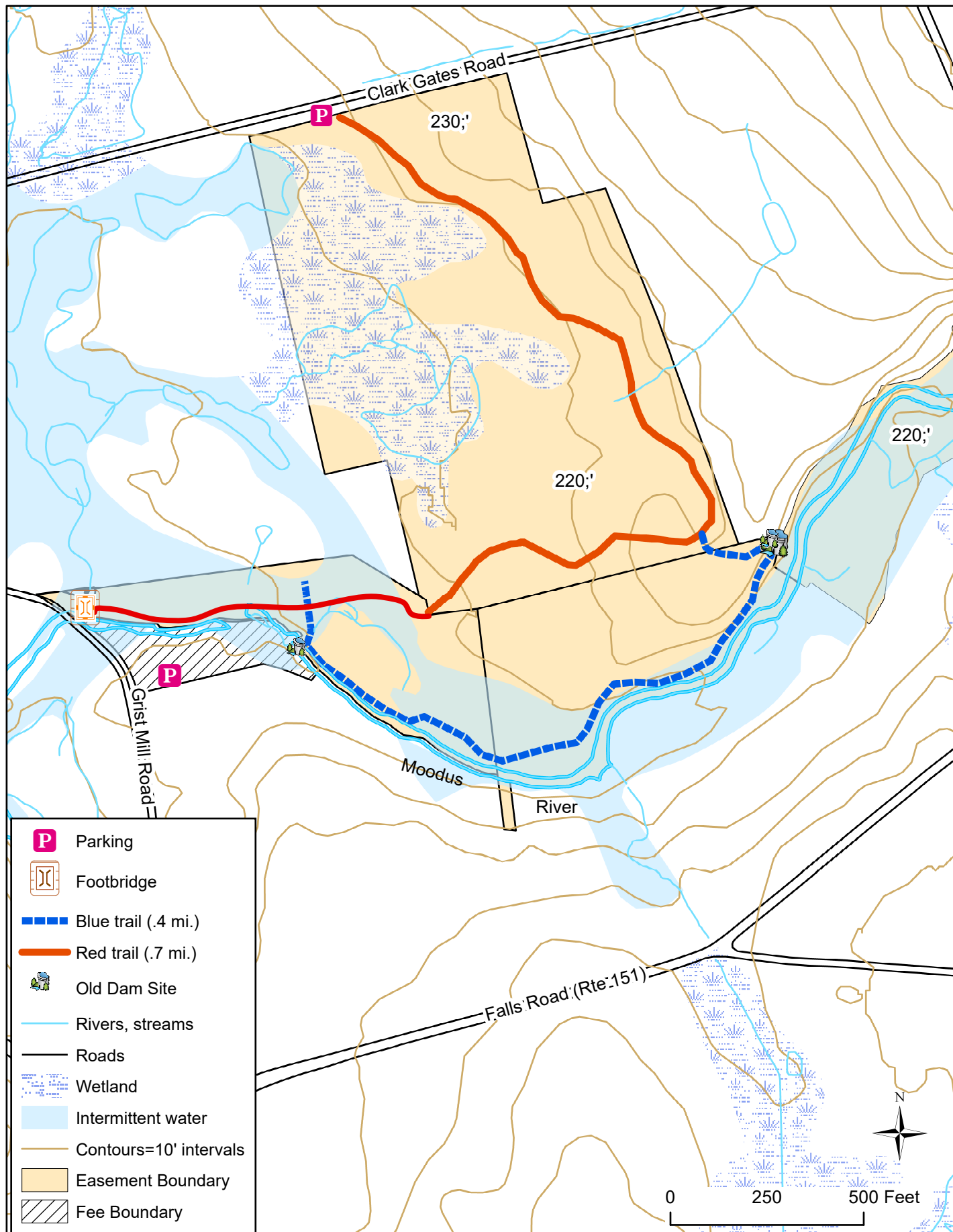
EAST HADDAM TRAILS

HIDDEN VALLEY FARM PRESERVE

In 2013, East Haddam Land Trust acquired an easement on about 45 acres of land along the Moodus River from Gary and Donna Bogan which helped to fulfill its 30-year goal of protecting property along the Moodus River. EHLT also purchased 1 1/2 acres from the Bogans to use as a trailhead for parking and fishing access. The easement protects about 4200 feet of the Moodus River and two historic former dams. It also provides fishing access along the river. In exchange for grants from the State of CT, the State has an easement on the property which provides further protection to ensure this acreage will remain protected and be accessible to the public forever. The upstream dammed pond provided water power for the East Mill twine manufacturer. The down stream dam and mill race provided water to power an earlier grist mill and saw mill.



HIDDEN VALLEY FARM PRESERVE



For general reference only

Managed by **EAST HADDAM LAND TRUST**